

Build cmaplwrapper.dll using existing Visual Studio solution

1. Create a new directory as workspace on your linux vm.

`mkdir ~/mount`

The directory path and name is not require to be ~/mount, please replace ~/mount with your directory path and name in following steps if you choose to use other name and path.

2. Copy cmaplwrapperwindows from Acquisition branch.

`cd [your acquisition workspace root]`

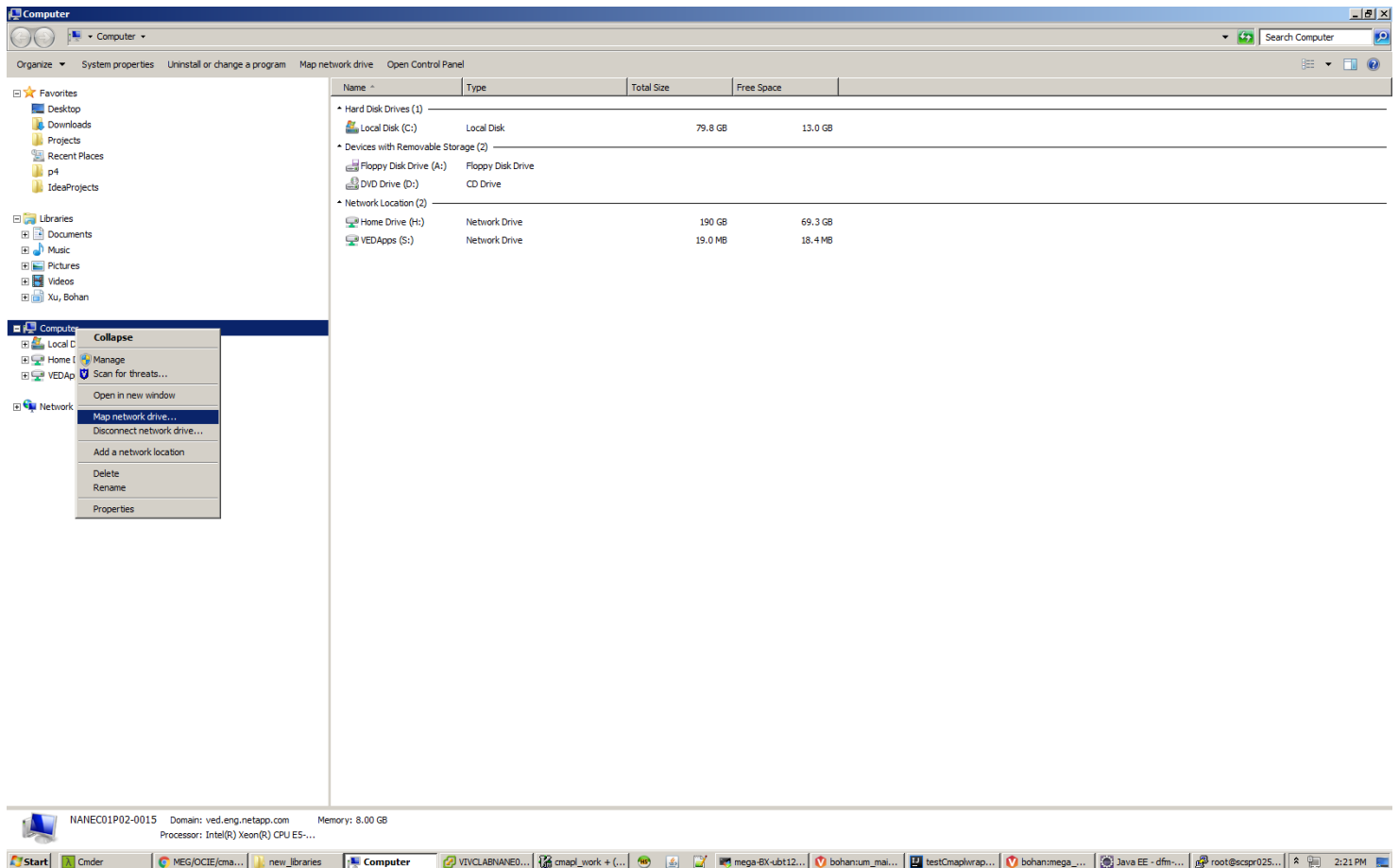
`cp -Lr modules/au-cmapl/src/clibrary/cmaplwrapperwindows/cmaplwrapper ~/mount/`

Please make sure using -L option when copy cmaplwrapper directory.

3. Goto your windows machine, map ~/mount as drive P.

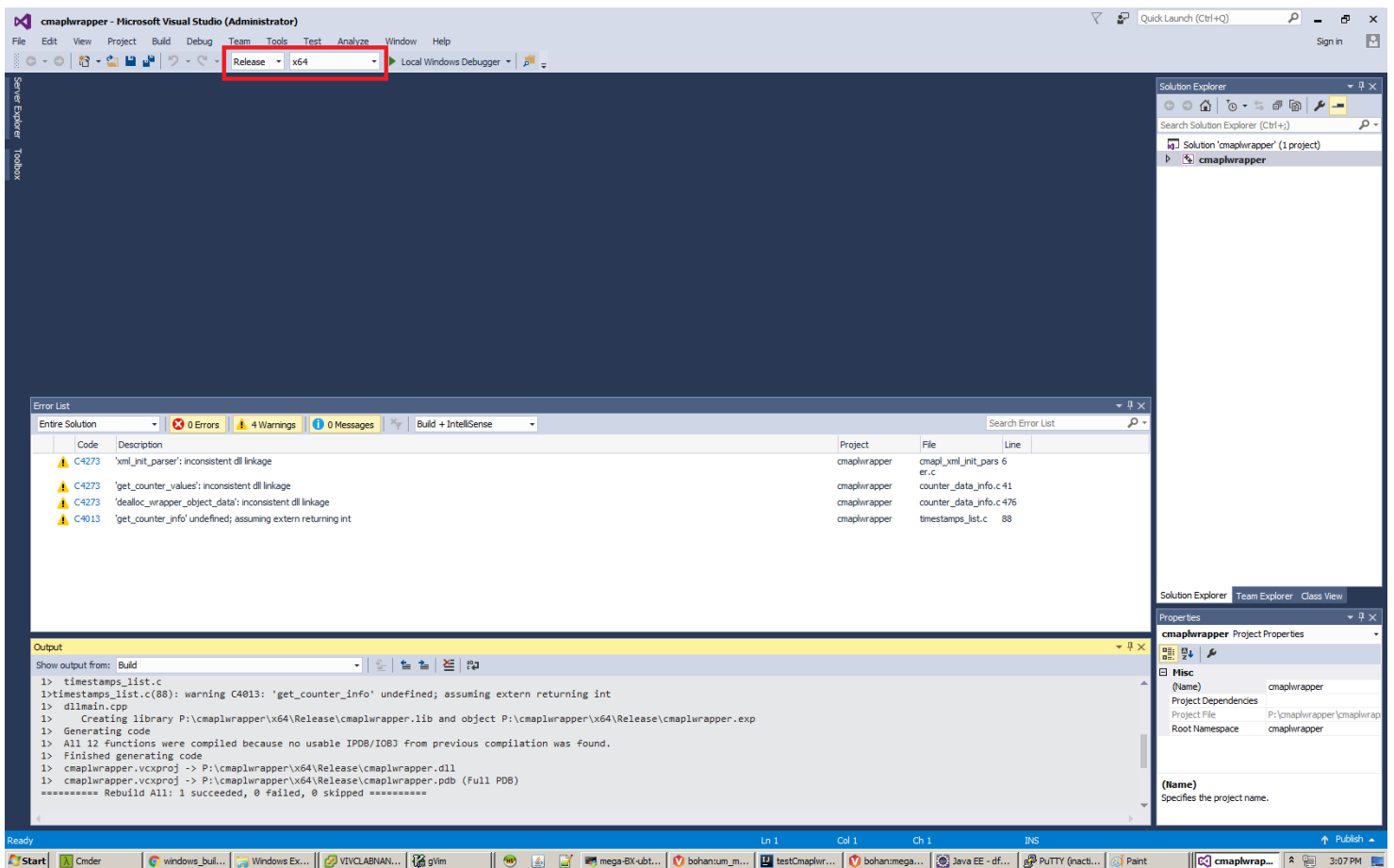
It is important to choose drive P.

When mapping, use \\aurora.nane.netapp.com\[your sso]\mount as Folder.



4. Goto P:\cmaplwrapper on your windows machine, double click cmaplwrapper.sln

5. In visual, make sure you selected 'Release' and 'x64'.



6. Click Build -> Build Solution.

7. Cmaplwrapper.dll will be generated under P:\cmaplwrapper\x64\Release.